

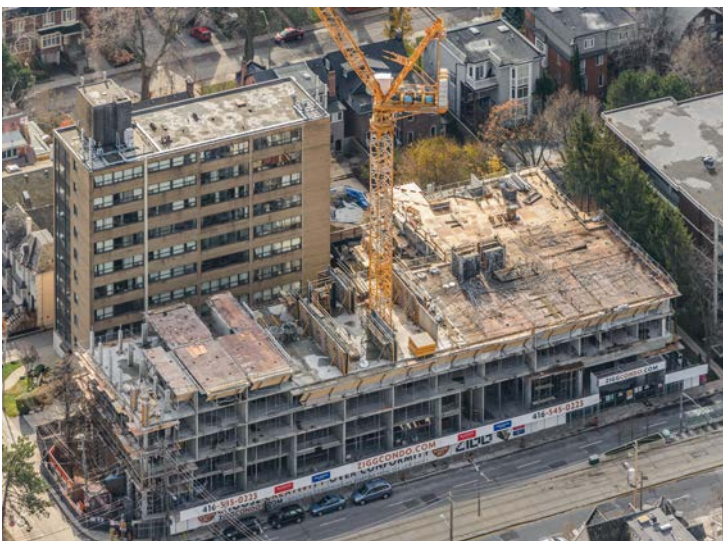
Prepared by SCP Developments Limited

Happy New Year!

General Update,

With 2/3 of the structure completed, the building envelope work will now commence. The installation of the precast panels and the windows will take several months to complete. The targeted completion timeline is to have the whole building buttoned up for the summer.

While the formwork will be completed early spring, weather pending, the crane will remain installed for 4-8 more weeks in order to load various other heavy equipment and material. Once the crane is scheduled to be removed a notice will be sent out to the community advising of any road closures.



Construction Schedule (tentative dates)

January 23

Precast installation begins

February 20

Window installation begins

March 5

Formwork Completion

Construction Work Hours

Typical construction work hours are as follows:

M-F : 7am to 7pm

Sat : 9am to 7pm

Sun/Holidays: No Work

For Construction Related Concerns:

Zigg.info@madisongroup.ca

OR

416-201-4121